

0 0.5 1 2 3 4 5 6 Miles
1 inch equals 22,938 feet

Legend

- Interstate
- Highway
- Secondary Roads
- Local Road
- Minor Road
- Pipelines
- Other
- Intermittent Streams
- Major Streams
- Major Railroads
- Townships
- Sections
- County Lines
- Water
- Places
- Powell Group



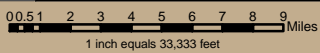
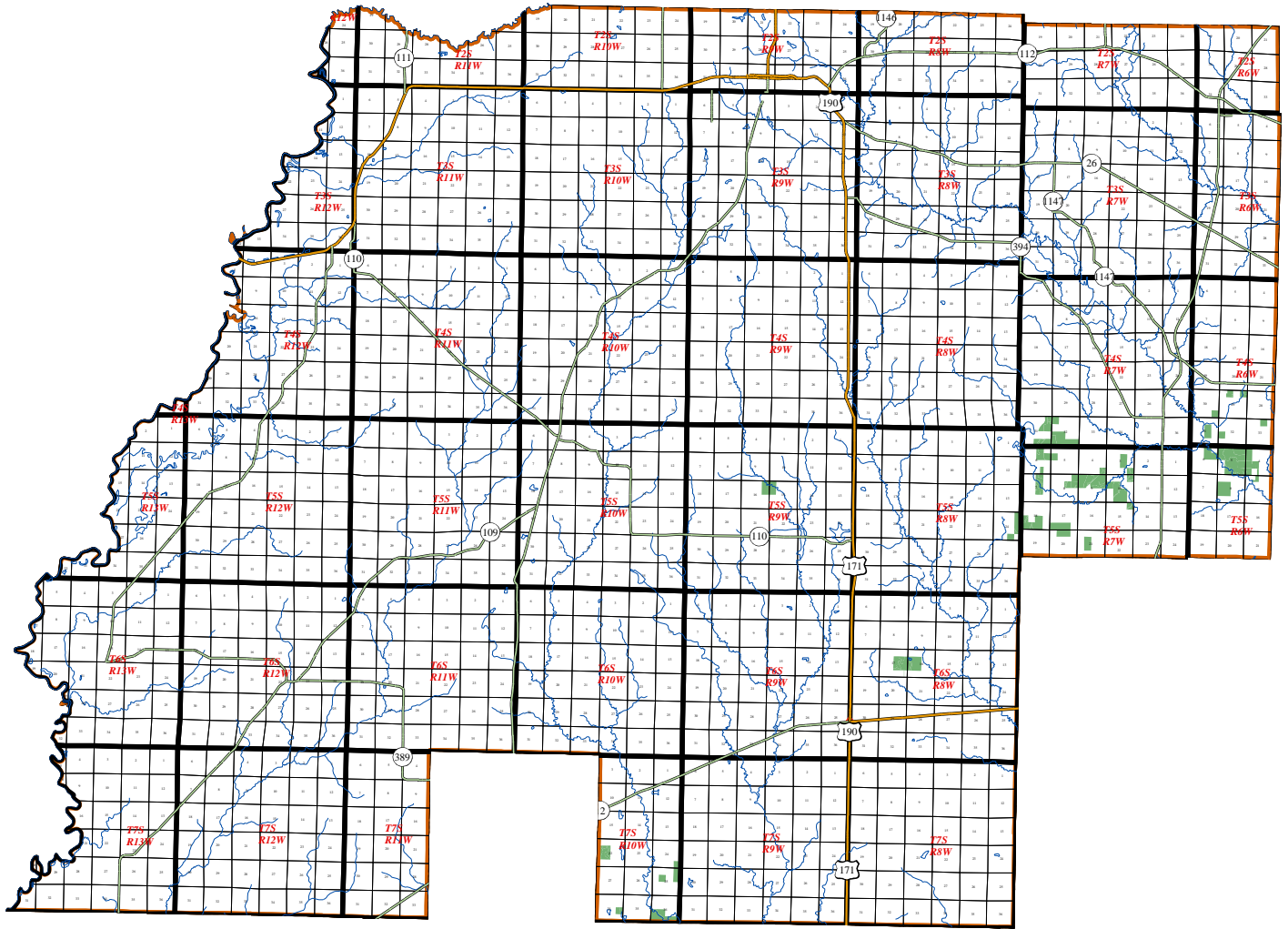
Lands of
The Powell Group
located in
Allen Parish, Louisiana



E & F
Resource Management, LLC
Forestry Consultants & Managers
16854 Cold Harbor Ave.
Baton Rouge, Louisiana 70817
225-921-3613
info@efresgmt.com



Map prepared using public and proprietary spatial data. E&F Resource Management LLC does not warrant its accuracy. This map should not be used to establish legal boundaries or specific locations.



- Legend**
- Interstate
 - Highway
 - Secondary Roads
 - Local Road
 - Minor Road
 - Other
 - Pipelines
 - Intermittent Streams
 - Major Streams
 - Major Railroads
 - Townships
 - Sections
 - County Lines
 - Water
 - Places
 - Powell Group



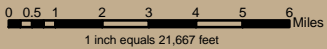
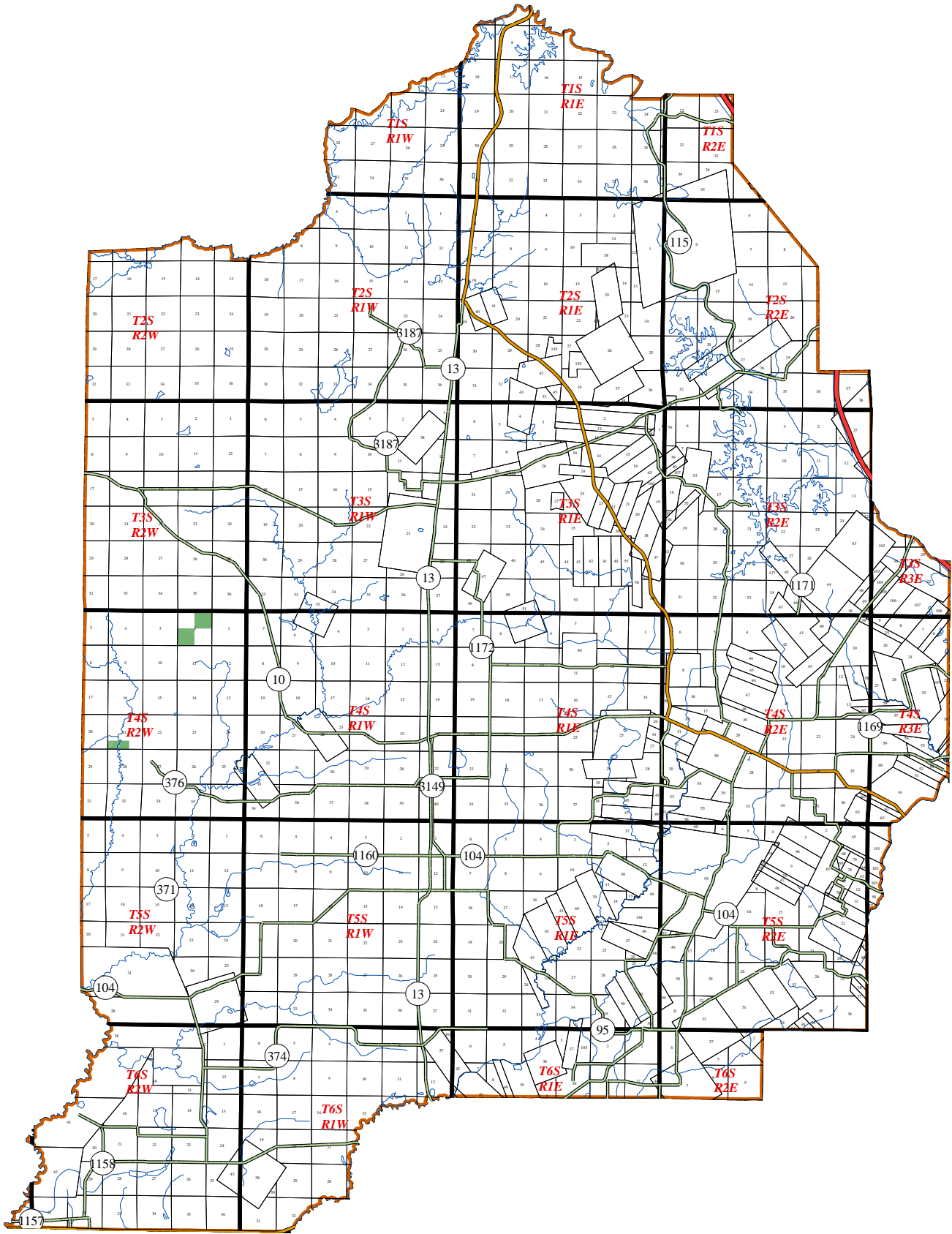
Lands of
The Powell Group
 located in
Beauregard Parish, Louisiana



E & F
Resource Management, LLC
 Forestry Consultants & Managers
 16854 Cold Harbor Ave.
 Baton Rouge, Louisiana 70817
 225-921-3613
 info@efresgmt.com



Map prepared using public and proprietary spatial data. E&F Resource Management LLC does not warrant its accuracy. This map should not be used to establish legal boundaries or specific locations.



- Legend**
- Interstate
 - Highway
 - Secondary Roads
 - Local Road
 - Minor Road
 - Other
 - Pipelines
 - Intermittent Streams
 - Major Streams
 - Major Railroads
 - Townships
 - Sections
 - County Lines
 - Water
 - Places
 - Powell Group



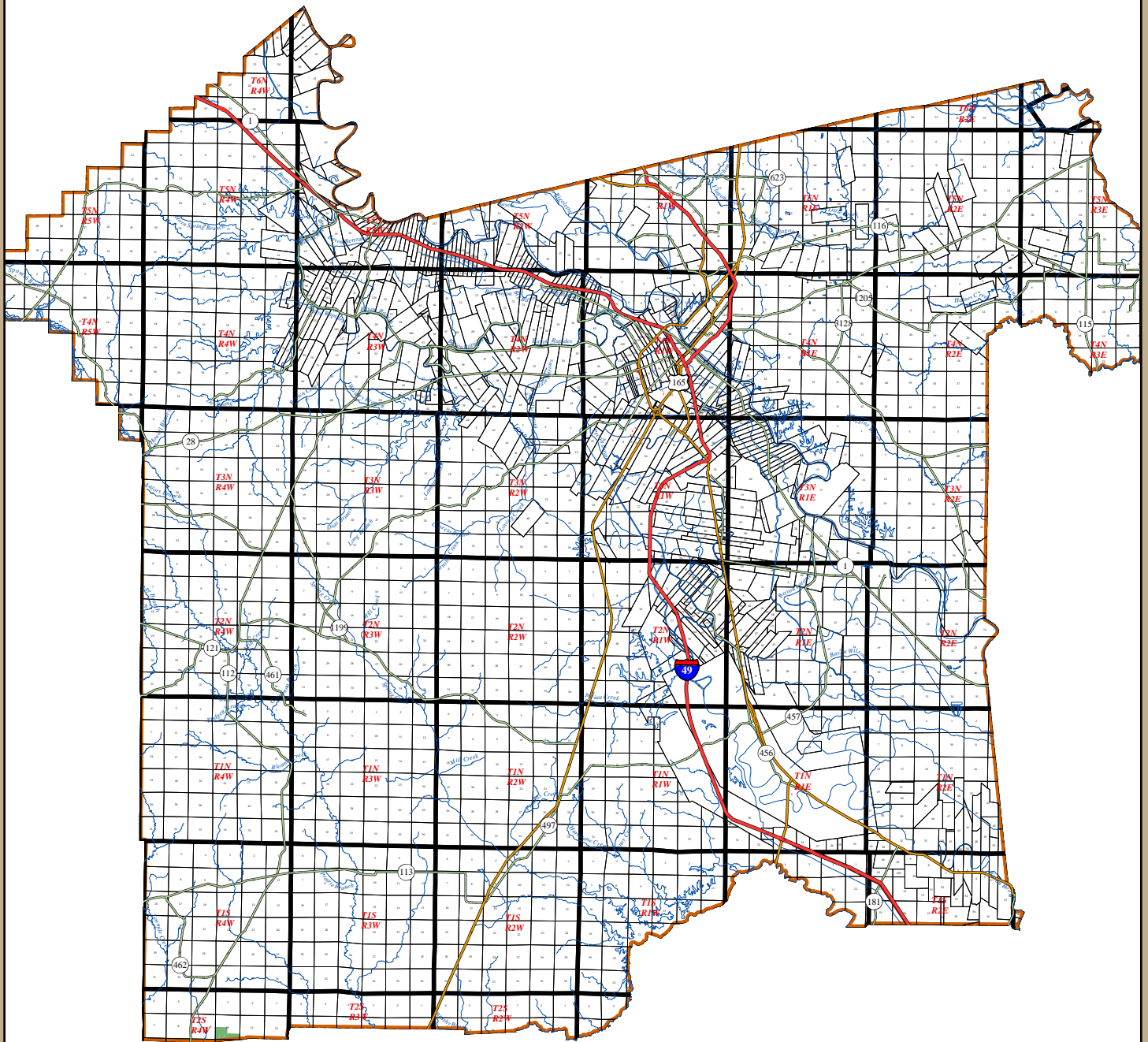
Lands of
The Powell Group
 located in
Evangeline Parish, Louisiana



E & F
Resource Management, LLC
 Forestry Consultants & Managers
 16854 Cold Harbor Ave.
 Baton Rouge, Louisiana 70817
 225-921-3613
 info@efresgmt.com



Map prepared using public and proprietary spatial data. E&F Resource Management LLC does not warrant its accuracy. This map should not be used to establish legal boundaries or specific locations.



0 0.5 1 2 3 4 5 6 7 8 9 Miles
1 inch equals 33,333 feet

Legend

- Interstate
- Highway
- Secondary Roads
- Local Road
- Minor Road
- Pipelines
- Powerlines
- Other
- Intermittent Streams
- Major Streams
- Major Railroads
- Townships
- Sections
- County Lines
- Water
- Places
- Powell Group



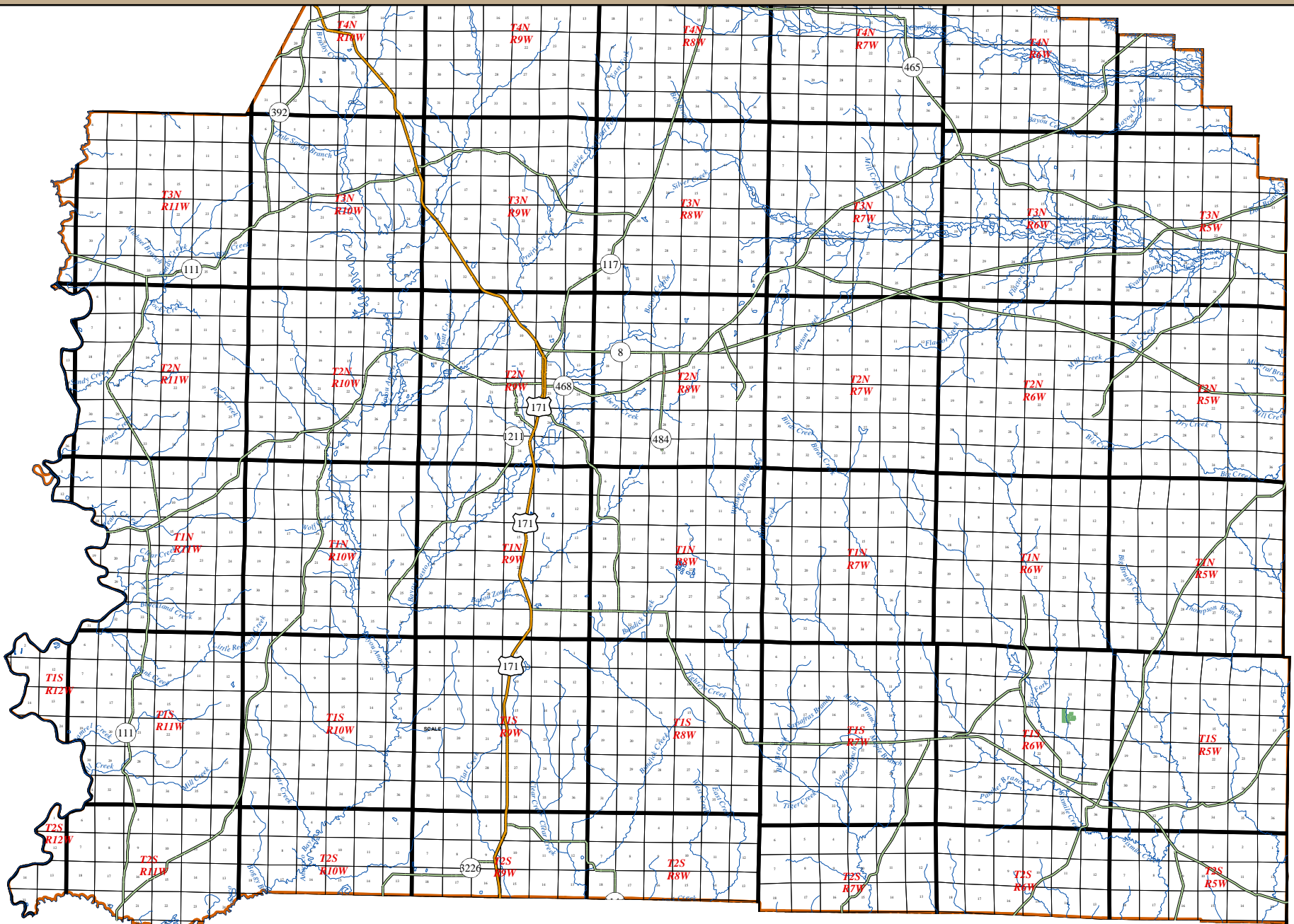
Lands of
The Powell Group
located in
Rapides Parish, Louisiana



E & F
Resource Management, LLC
Forestry Consultants & Managers
16854 Cold Harbor Ave.
Baton Rouge, Louisiana 70817
225-921-3613
info@efresgmt.com



Map prepared using public and proprietary spatial data. E&F Resource Management LLC does not warrant its accuracy. This map should not be used to establish legal boundaries or specific locations.



Legend

- Interstate
- Highway
- Secondary Roads
- Local Road
- Minor Road
- Other
- Major Streams
- Intermittent Streams
- Pipelines
- Powerlines
- Major Railroads
- Townships
- Sections
- County Lines
- Water
- Powell Group

0 0.5 1 2 3 4 Miles

1 inch equals 24,945 feet

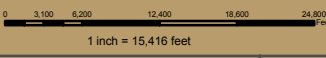
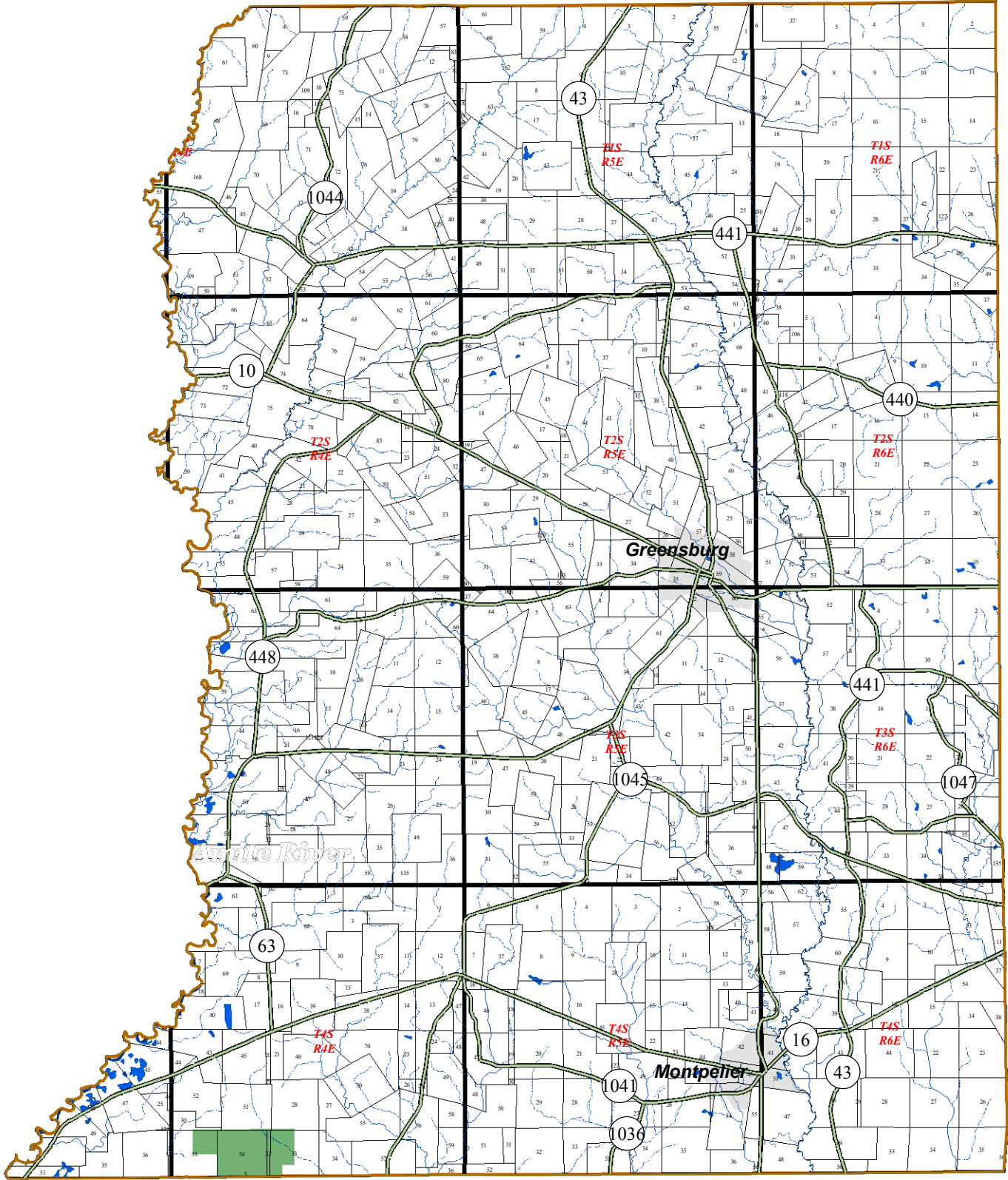


Lands of
The Powell Group
 located in
Vernon Parish, Louisiana



E & F
 Resource Management, LLC
 Forestry Consultants & Managers
 16854 Cold Harbor Ave.
 Baton Rouge, Louisiana 70817
 225-921-3613
 info@efresgmt.com

Map prepared using public and proprietary spatial data.
 E&F Resource Management LLC does not warrant its
 accuracy. This map should not be used to establish
 legal boundaries or specific locations.



Legend	
	Interstate
	Highway
	Secondary Roads
	Local Road
	Minor Road
	Pipelines
	Other
	Intermittent Streams
	Major Streams
	Major Railroads
	Townships
	Sections
	County Lines
	Water
	Places
	The Powell Group Lands



Lands of
The Powell Group
 located in
St. Helena Parish, Louisiana



E & F
Resource Management, LLC
 Forestry Consultants & Managers
 16854 Cold Harbor Ave.
 Baton Rouge, Louisiana 70817
 225-921-3613
 info@efsmgt.com



Map prepared using public and proprietary spatial data. E&F Resource Management LLC does not warrant its accuracy. This map should not be used to establish legal boundaries or specific locations.